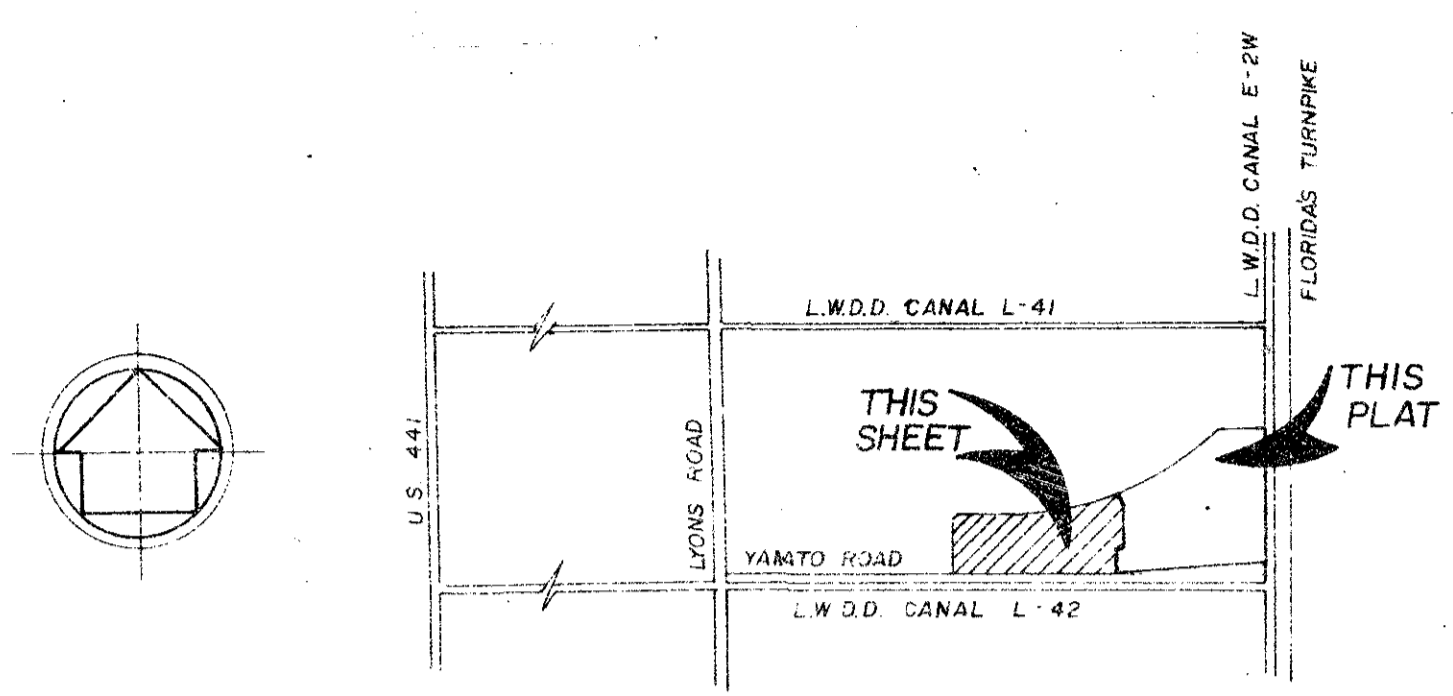
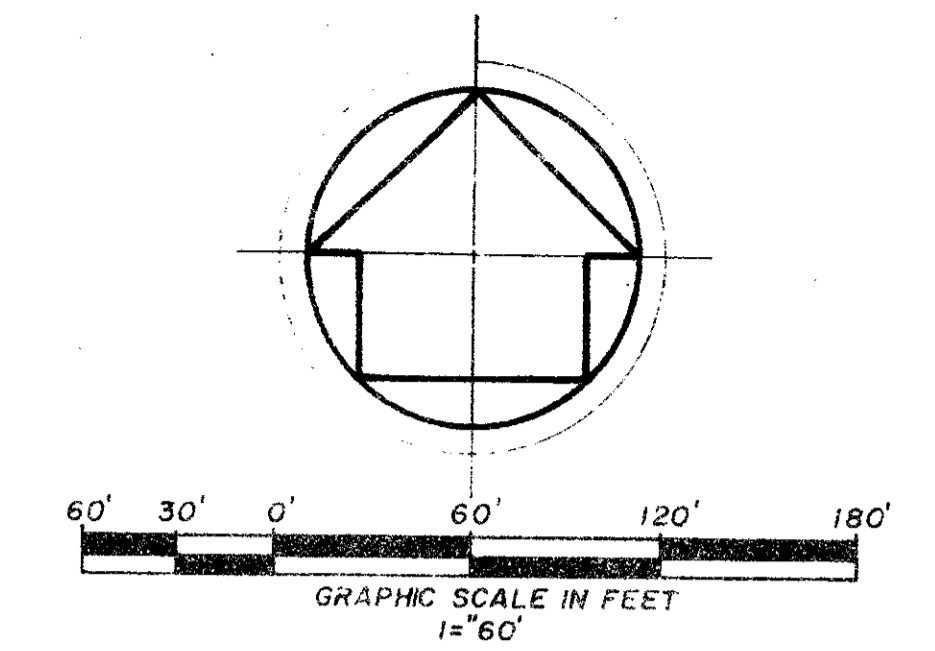


WHISPER WALK SECTION "C"

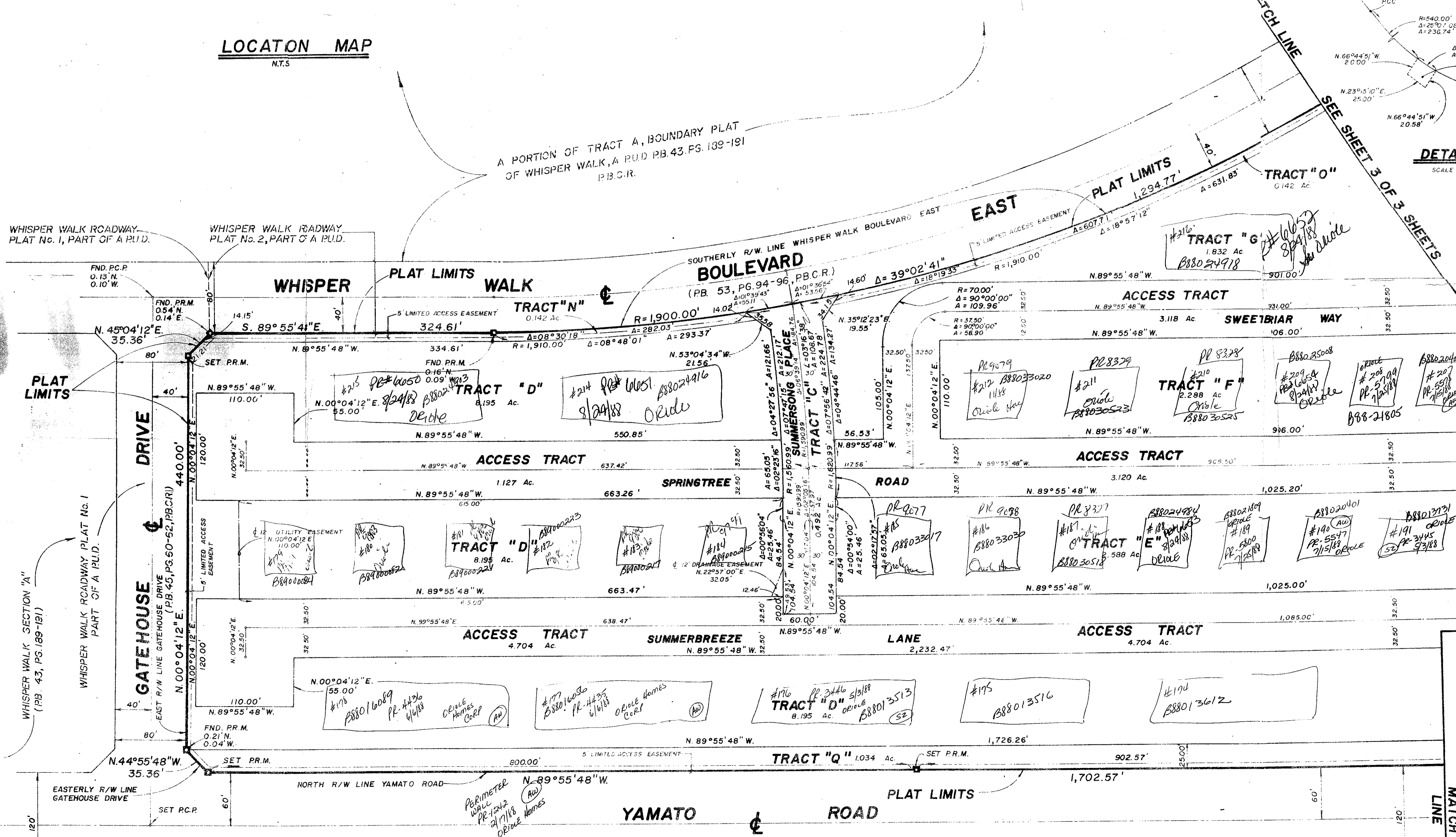
SITUATE IN SECTION 5, TOWNSHIP 47 SOUTH,
RANGE 42 EAST, PALM BEACH COUNTY, FLORIDA,
BEING A REPLAT OF A PORTION OF TRACT A OF
THE BOUNDARY PLAT OF WHISPER WALK, A P.U.D.
(P.B. 43, PG. 189-191)

Prepared By
CRAIG A. SMITH & ASSOCIATES
CONSULTING ENGINEERS & SURVEYORS
1000 WEST McNAB ROAD
POMPANO BEACH, FLORIDA
BY: **FREDERICK E CONROD, III, P.L.S. 2816**
MARCH 1987

STATE OF FLORIDA }
COUNTY OF PALM BEACH } S.S.
THIS PLAT WAS FILED FOR
RECORD AT _____, THIS
DAY OF _____, 1987, A.D.,
AND DULY RECORDED IN PLAT BOOK
No. _____ ON PAGES
AND
JOHN B. DUNKLE, CLERK
BY: _____, D.C.



LOCATION MAP
N.T.S.



DETAIL "A"
SCALE 1"=60'

- NOTES**
- BEARINGS SHOWN HEREON REFER TO THE EAST LINE OF THE BOUNDARY PLAT OF WHISPER WALK, A P.U.D., P.B. 43, PG. 189-191, P.B.C.R., SAID BEARING BEING S. 00° 51' 00" E.
 - P.M. INDICATES PERMANENT REFERENCE MONUMENT.
 - P.C.P. INDICATES PERMANENT CONTROL POINT.
 - NO BUILDINGS OR ANY KIND OF CONSTRUCTION SHALL BE PLACED ON UTILITY OR DRAINAGE EASEMENTS.
 - NO STRUCTURES, TREES OR SHRUBS SHALL BE PLACED ON DRAINAGE EASEMENTS.
 - APPROVAL OF LANDSCAPING ON UTILITY EASEMENTS OTHER THAN WATER OR SEWER SHALL BE ONLY WITH APPROVAL OF ALL UTILITIES OCCUPYING SAME.
 - WHERE UTILITY AND DRAINAGE EASEMENTS CROSS, DRAINAGE EASEMENTS SHALL TAKE PRECEDENCE.
 - IMPROVEMENTS NOT SHOWN.
 - NOTICE: THERE MAY BE ADDITIONAL RESTRICTIONS THAT ARE NOT RECORDED ON THIS PLAT THAT MAY BE FOUND IN THE PUBLIC RECORDS OF THE COUNTY.

TAZ 770
SUBDIVISION OF Whisper Walk P.U.D.
BLOCK 55
LOT 18
P.U.D. # 215A
RS
2487

Ref. 80-229

0339-003

WHISPER WALK SECTION "C" 58/182